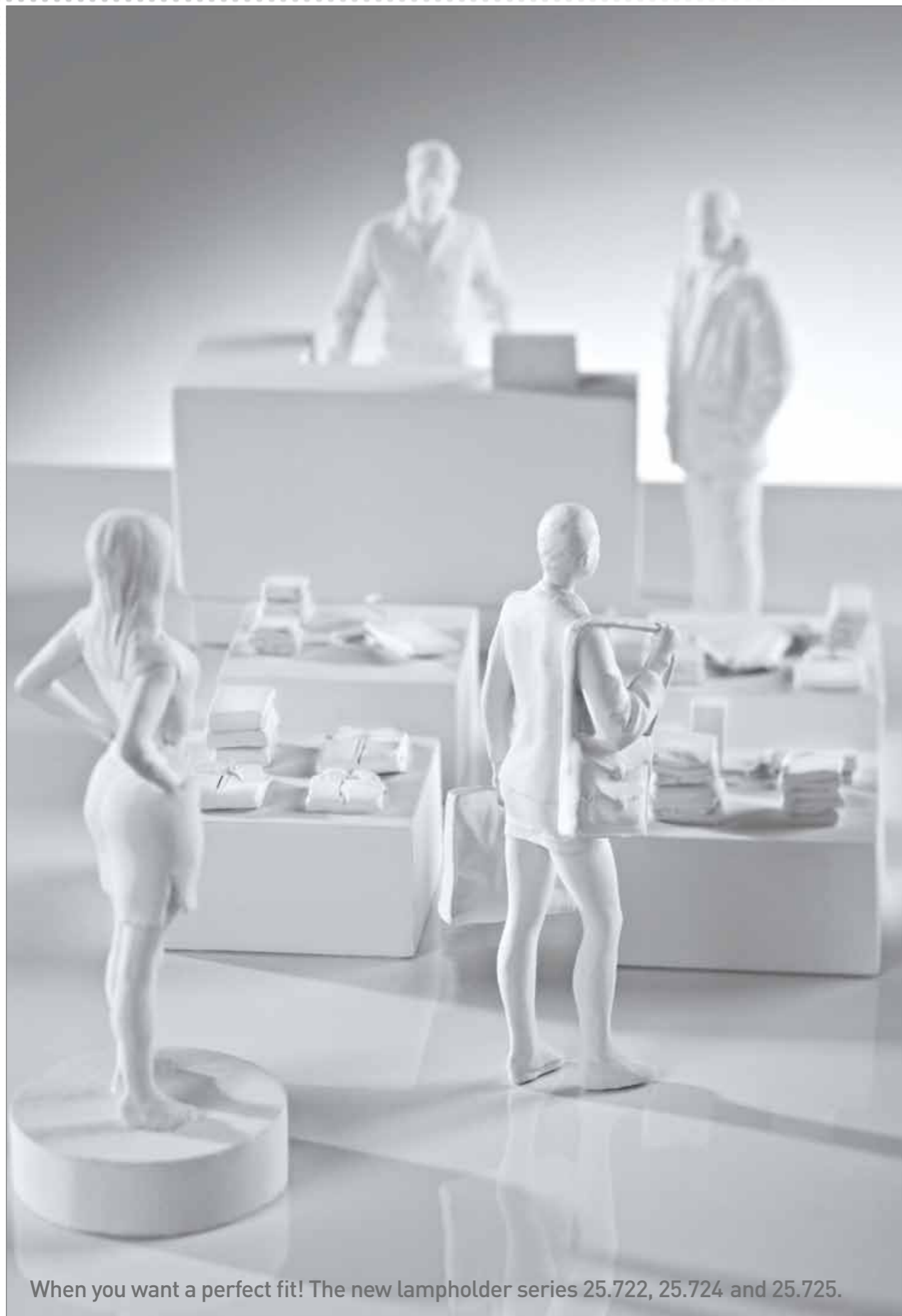


Extended range for greater flexibility
New G8.5 HID lampholder



Your Connection to Light



When you want a perfect fit! The new lampholder series 25.722, 25.724 and 25.725.

Lampholders for G8.5 discharge lamps

Prerequisites...

- Improved handling of G8.5 lamps, especially in connection with OSRAM's Secure Fix lamp base
- Precise lamp insertion, less risk of breakage
- Secure lamp retention via separation of electrical contact and mechanical positioning elements
- Excellent positioning of lamp



New: Also available for 14 mm screw fixing centres

There is a solution for your requirements

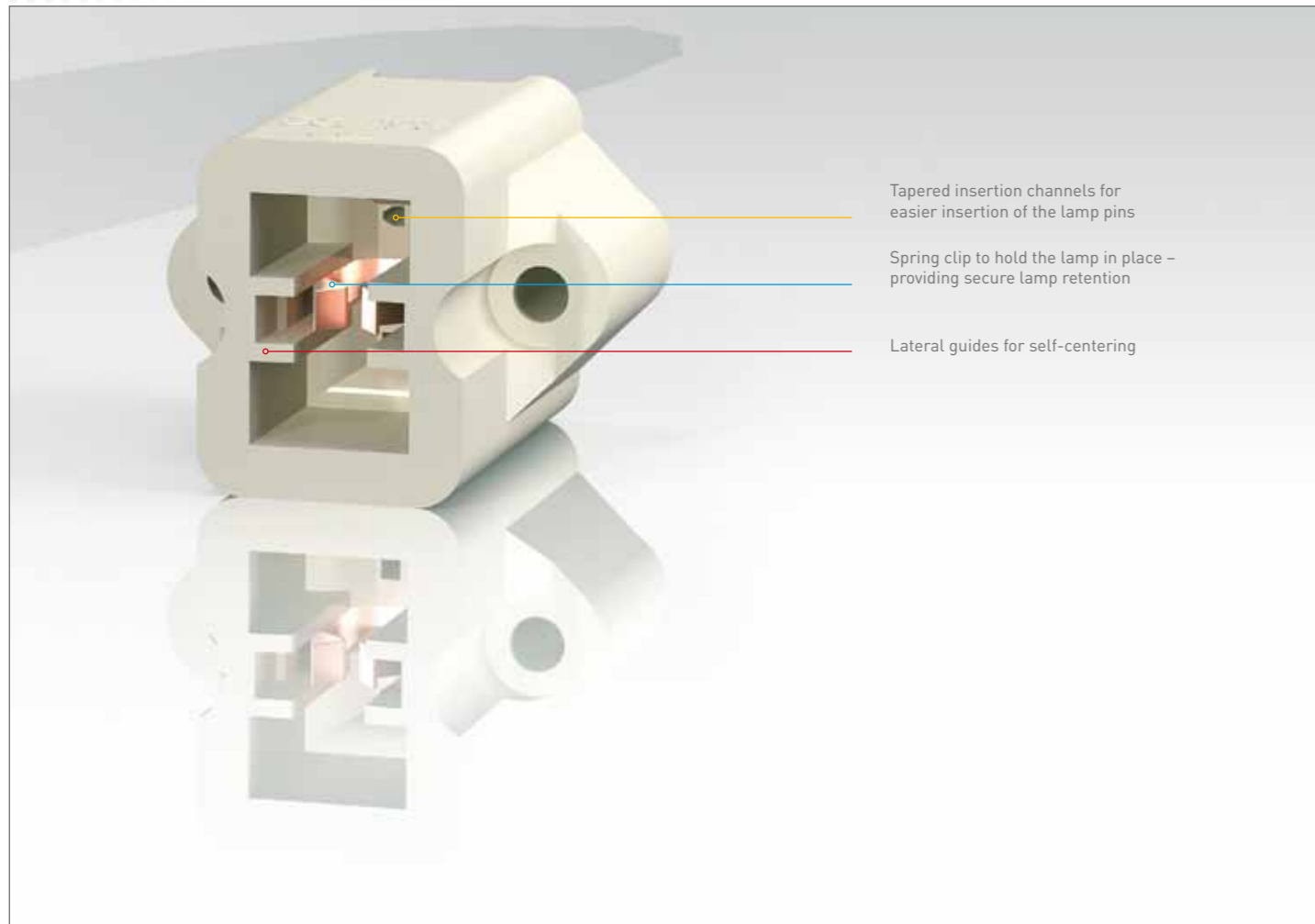
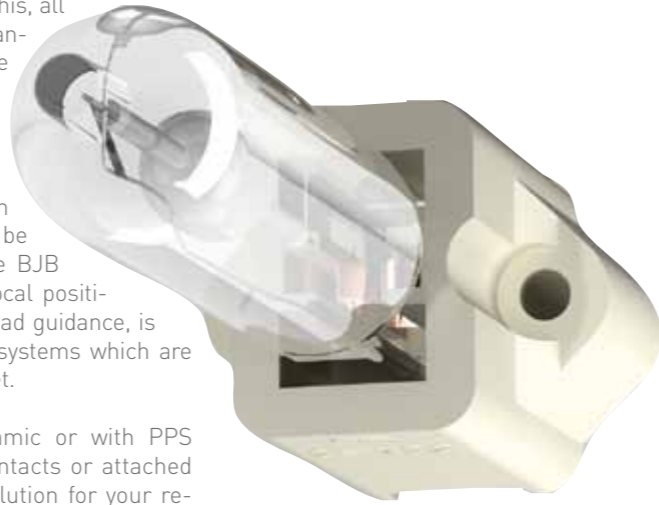
With this series we offer more solutions for light fitting developments with HID lamps. The basic concept of this lampholder has been developed in close cooperation with OSRAM and considers in particular the geometry of the Secure Fix lamp base for better fit and less lateral movement. Furthermore, additional innovations make the handling significantly easier, also when using lamps made by other manufacturers.

Our lampholder series 25.722 is suitable for use with all standard G8.5 lamps. Improved lamp fixing is achieved by use of lamps with OSRAM's Secure Fix lamp base.

The positioning of the lamp is ensured by lateral guides and additional spring clips. This ensures a particularly secure fixing of the lamp.

An interesting addition within this lampholder series are our versions 25.724/25.725 with screw fixing distance 14 mm. For this, all features of the standard version were duplicated within a smaller external shape. Fittings with existing screw fixing distances of 14 mm can now as well be equipped with these BJB lampholders. The focal position, as well as the lead guidance, is compatible to G8.5 systems which are already in the market.

Whether solid ceramic or with PPS cover, push wire contacts or attached wires, there is a solution for your requirements.



Tapered insertion channels for easier insertion of the lamp pins

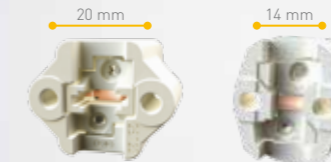
Spring clip to hold the lamp in place - providing secure lamp retention

Lateral guides for self-centering



Versions

- Lampholder body ceramic with PPS cover, for temperatures up to 250 °C
- Lampholder body ceramic with PPS cover, for temperatures up to 250 °C, with cables attached
- Solid ceramic version with cables attached, for temperatures up to 350 °C
- Solid ceramic version with push wire contacts, for temperatures up to 300 °C
- Screw fixing distance 20 mm or 14 mm

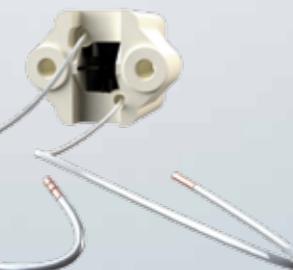


Solid ceramic version with push wire contacts, also available with cables attached

Ceramic with plastic cover and push wire contacts



Ceramic with plastic cover and cables attached



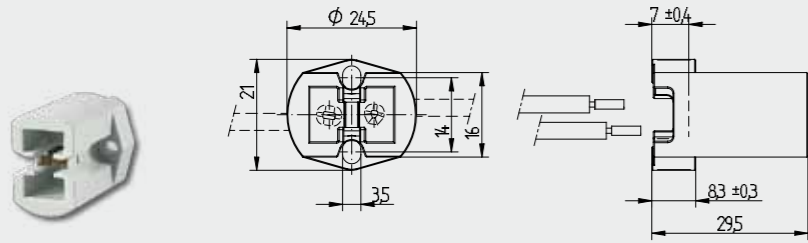
Lampholders for discharge lamps

25.724 25.725
25.822

G8.5



pkg. wt. part no.
144 20 g 25.724.1000.00



Screw fixing
Housing: Ceramic
Connection: Push wire terminals

- Fixing centres: 14 mm
- Maximum permissible diameter of the insulation 4.2 mm
- Wires permanently joined after insertion
- For screws: \varnothing 3 mm

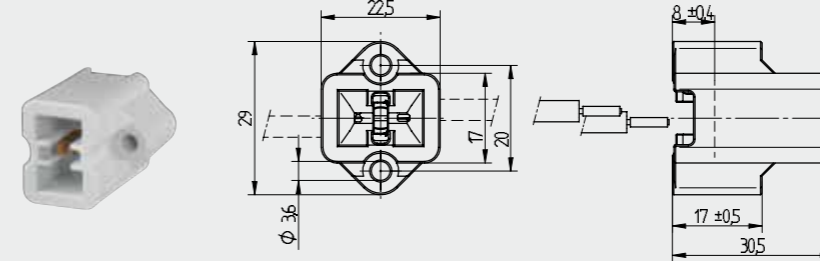


Lampholders for discharge lamps

25.722



pkg. wt. part no.
216 24 g 25.722.2000.00

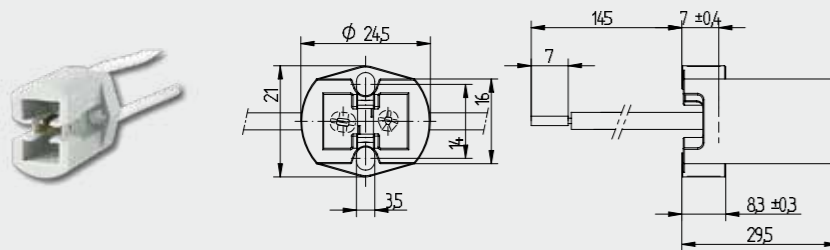


Screw fixing
Housing: Ceramic / Ceramic
Connection: Push wire contacts

- Self positioning of lamp
- Wires permanently joined after insertion
- The correct function is obtained by screw fixing
- For screws: \varnothing 3 mm



pkg. wt. part no.
144 24 g 25.725.1001.00



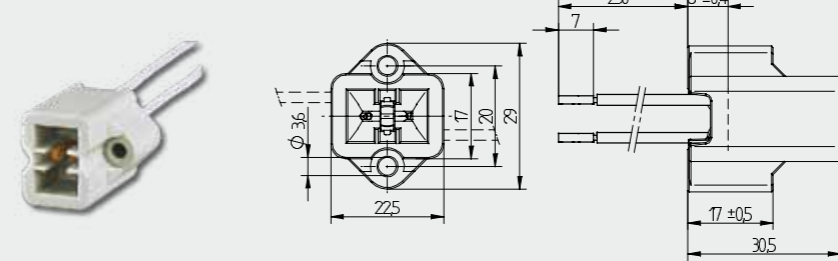
Screw fixing
Housing: Ceramic

Wires: with 2 ignition wires, Cu, nickel plated, 0.75 mm², with ferrule, Insulation: silicone (max. 180° C), Free cable length: 145 mm

- Other versions on request
- Fixing centres: 14 mm
- For screws: \varnothing 3 mm



pkg. wt. part no.
144 26 g 25.722.3001.00



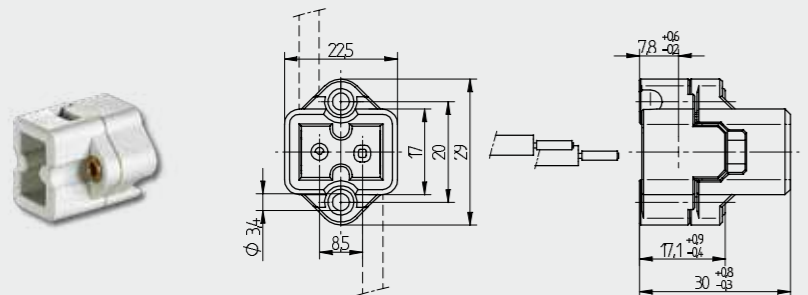
Screw fixing
Housing: Ceramic / PPS

Wires: Cu, nickel plated 0.75 mm², with ferrule, Insulation: PTFE (max. 250 °C), transparent, Free cable length: 230 mm

- Self positioning of lamp
- The correct function is obtained by screw fixing
- VDE-REG-No.: C549
- For screws: \varnothing 3 mm



pkg. wt. part no.
216 26 g 25.822.1001.00

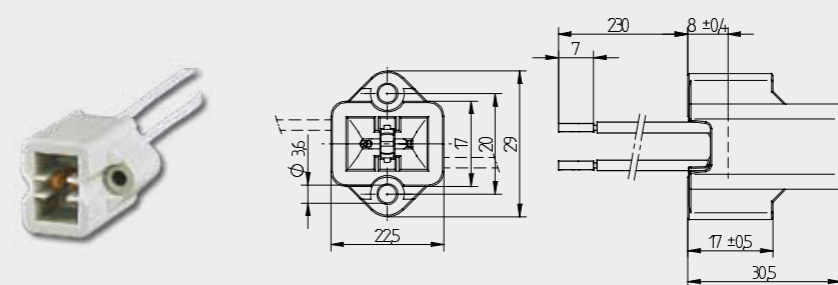


Screw fixing
Housing: Ceramic
Connection: Push wire terminals

- Maximum permissible diameter of the insulation 4.2 mm
- Wires permanently joined after insertion
- For screws: \varnothing 3 mm



pkg. wt. part no.
252 40 g 25.722.6301.00



Screw fixing
Housing: Ceramic / PPS

Wires: PFA, 18 AWG, 600 V, 250 °C, white, Free cable length: 152 mm

Approval: only cURus

- Self positioning of lamp
- The correct function is obtained by screw fixing
- For screws: \varnothing 3 mm



BJB GmbH & Co. KG · Werler Str. 1 · 59755 Arnsberg · Germany
Telephone +49 2932 982-0 · Fax +49 2932 982-8201
info@bjb.com · www.bjb.com



Your Connection to Light